

. . . ( . . . , . )

The diversification of economic activities of the mining enterprise on the basis of complex use of bowels for the purpose of transition from monogrocery before polygrocery manufacture is proved. Directions of increase of efficiency ecological and economic activities and savings of resources at the enterprises of mining branch are offered.

[1]. 120 . ,

1,5

[2]. ,

,

7-10

[3].

65 90%

117,3

6,5

[4].



- 
- 
- 

( ).

( );

( );

[5, 6].

- 
- 

;

— 60% ,

, .

( , )

.

, , , -

, , , ,

, . ,

,

, .

,

, ,

— 3-10%.

,

, ,

.

, ,

.

[5, 6].

,

, —

.

.



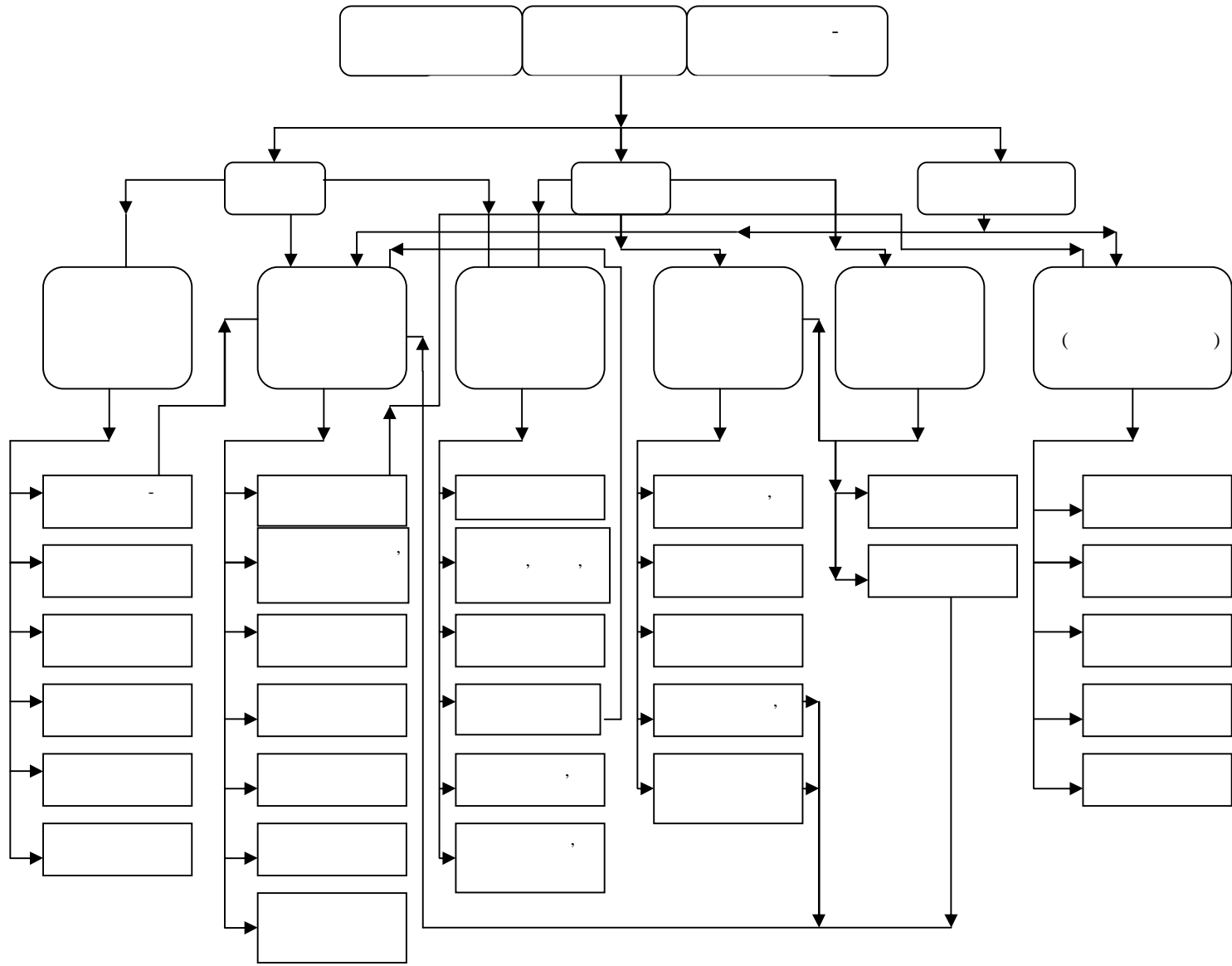
(

);

(

)

.2 [6].





-

.

.

.

,

,

.

.

,

,

,

,

,

,

.

.

<<

>>

,

,

.

.

.

,

.

.

.

,

.

:

1. . [ ] / . //
2. . . « »/ . . , . . , . . - . - 2005. - 55 .
3. . . / . . , 2007. - 176 .
4. . . / . . // . - 2008. - 49. - .10.
5. . . - // - ( - ). - : . - 2009., .6., 12. - . 167-178.
6. . . / . . , . . , . . - : « », 2010. - 519 .