

622.235

10,0

( + )

3900 / .

(d ) 51

2 .

50

6 ,

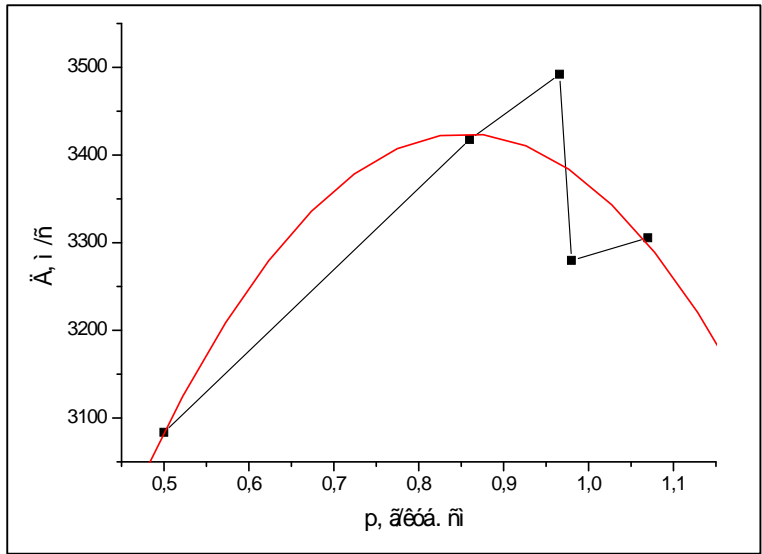
.  
.....  
.1.

1.

( )

	,l ,	M ,	p, / <sup>3</sup>	L ,	, , /
1.	360	490	0,5	107	3083,57
2.	350	620	0,86	108	3417,72
3.	345	680	0,966	110	3492,06
4.	305	610	0,98		3279,7
5.	340	745	1,07	119	3305,5

.1.



.1 (p) ( )

1 - ;  
2 -

:

$$= 1442.24 + 4640.31 \cdot \rho - 2715.61 \cdot \rho^2 \quad (1)$$

0,9 – 0,96

/ 3.

0,68 – 0,70 / 3.

79/21

50/50.

(l ) 360 – 380 ,

200 .

(d ) 40 ,

50-

6 .

.2.

2

1.		780	3500	3270-3300	1835
2.	79/21	879	3600		1024
3.	50/50	854	3500	2000 [1]	1755

– .3.



.3.

)  
) 79/21 ;

79/21 50/50

79/21 50/50

79/21

( )

50/50

1. . . . .  
.,» » 1974, .17-27 - . « », 74/31,