

THE MAIN DIRECTIONS OF ACTIVITY OF THE COMPANY IN-CONTROL., Inc.

Sergey N. Shapochka, Ph. D., Project Engineer

(Company «In Control., Inc.» Birmingham, Alabama, USA)

The company is located in the Birmingham's South suburbs which called City of Pelham. Birmingham is an average size city with a population about 750000 people and a metro area population is about 1.5 mln. Birmingham is among 50 largest cities in USA. It is a largest city in Alabama, it is an industrial city and has 5 Universities. The economy of Alabama was growing really fast during last ten years and now instead of old type of industries like steel and paper mills, coal mines and heavy machinery the main industries are airspace, automotive (Mercedes, Honda, Toyota, Hyundai, Michelin. International Diesel built large factories in Alabama during last 5 years), health care related industries, biotechnology and other hi-tech industries.



In-Control is an typical for USA average size automation integration company. We are specialized in design, building, starting-up and tech. support of large custom control systems for mainly air-space and automotive industries. We do projects for machinery, metallurgical, mine and construction industries as well. During last 2-3 years we started designing and building our own robotic machinery likes different multy-axis gantries, heavy-duty actuators and robots.

The Project Engineer's duties include help to the sales person in quoting for the new job, all design including electrical and mechanical, purchasing parts and components, programming, shop supervision during control panel and machine construction, testing systems in our shop before shipment to the customers, start-up on site and following on-line and phone support of our product.

Our engineers usually travel a lot around the country and abroad (in Mexico, Panama) to start a project alone and it puts a lot of stress on us because they do not have anybody to ask for help or discuss a problem.

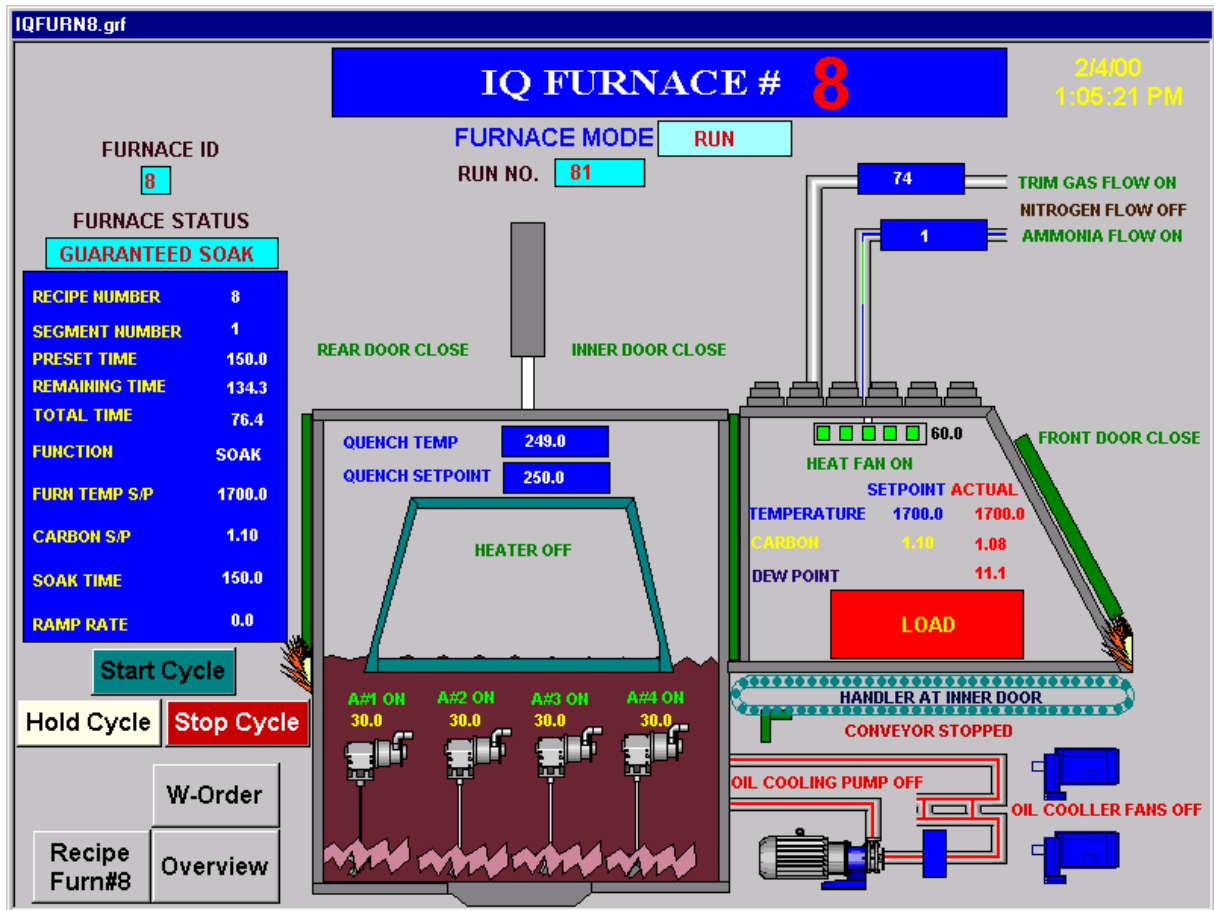
We use all kinds of modern type of controls - PLC Allen-Bradley, TI, Omron, Modicon, Siemens, PLC-Direct, direct PC control using Xicom, Ann Arbor, Phoenix, Bechhoff computers and software, Intellution, RSVIEW, Wonderware, Genesys SCADA HMI, all types of operator interfaces like PanelMate or PanelView, we use different database software like SQL-server, Access, RS-SQL for the data collection and acquisition, VB. We use almost all types of VFD, Servo and Stepper drives, we incorporate Kuka, Motoman robots in our machines and control systems. We use ACAD-2000 for design and work with laptops computers only which allows us to have all your software with you no matter where you are - in your office or on a road. The attachments are examples of In-Control's products and a link to our website - www.In-Control-Inc.com.



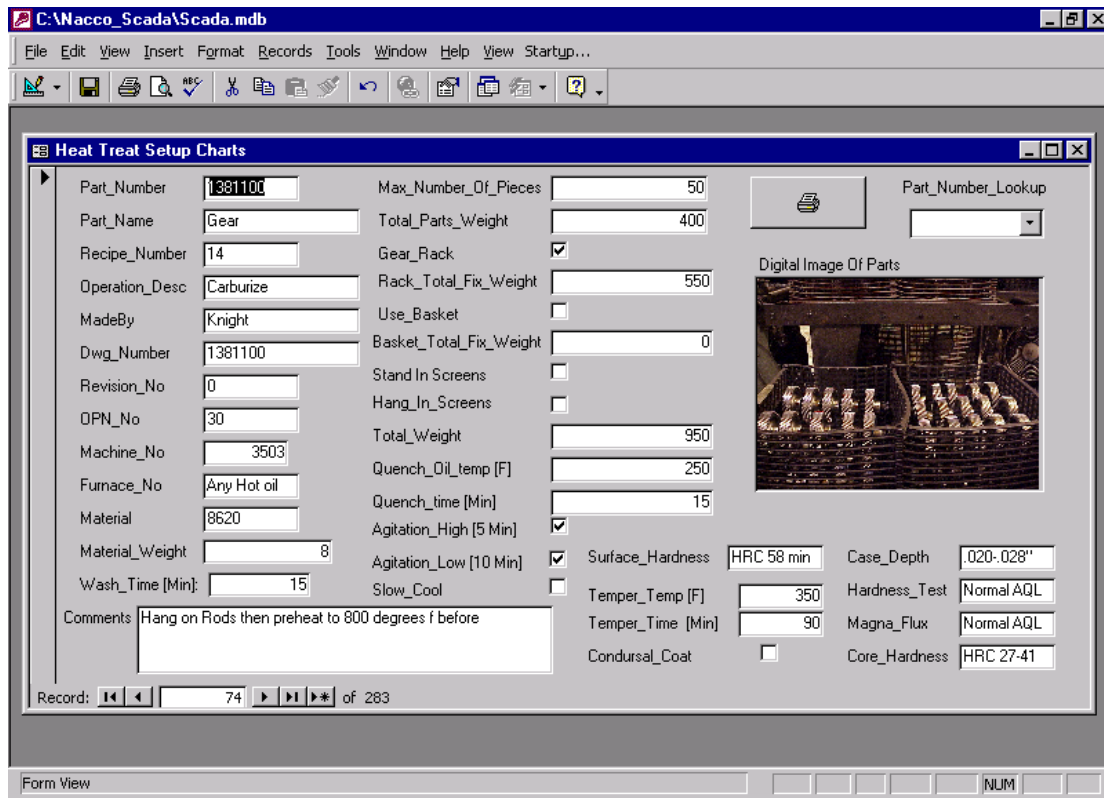
Motoman Wheel2lowres



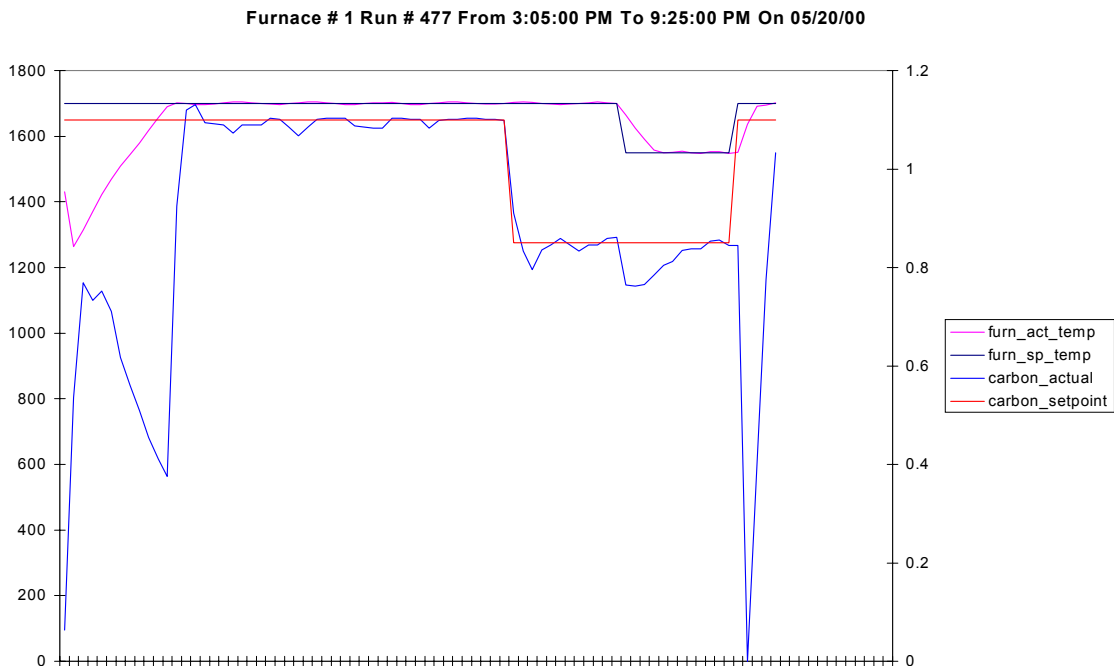
Motoman Wheel2lowres



This particular application featured a straight through internal quench Carburizing furnace. The Scada screen was designed to display all pertinent information about the process, as well as give the operator precise control. One click of the mouse takes you to an extensive recipe system.



Setting up your work order is a snap. Part number identifiers store all pertinent information for a particular load. Operators don't have to guess about how to load a basket with a digital picture right on the setup chart. Print this information out and store it for ISO registration.



Run number identifiers store historical information for each batch. Query information based on date, time, furnace number, run number, etc and graph